



TEAMS START HERE™

BASKETBALL | VOLLEYBALL | SIDELINE/COACHES





- 4 NEW PRODUCTS
- 6 BASKETBALL/STOCK UNIFORMS
- 12 BASKETBALL
- 20 LADIES BASKETBALL
- 24 VOLLEYBALL
- 36 SIDELINE/COACHES
- 48 WARMUPS
- 51 ACCESSORIES

DRIBBLE, DRIVE, FLY, SHO EVERY UNIFORM TELLS A

We know a uniform is the fabric that bonds a team together. That's just the beginning of the story. Every game is made up of moments. Whether it's the jump shot right before the buzzer, the block that sends a team into overtime, the three pointer that wins the game, these are the moments to remember. The moments to celebrate. And Augusta is there for each and every one of them. We are a part of your team's story from the very start.

HIGH PERFORMANCE FEATURES, BENEFITS & INNOVATION

LOOK FOR THESE ICONS NEXT TO THE STYLE NUMBER TO DENOTE FEATURES AND BENEFITS.



MOISTURE MANAGEMENT
fabric wicks moisture away keeping the body cool and dry



PRO CUT
longer rise and overall fuller fit



WATER RESISTANT
resists rain and water to keep the body protected and dry



4-WAY STRETCH
stretch properties allow for increased mobility



ODOR RESISTANT



DESIGNATES NEW 2014 PRODUCTS

NEW SIZES & COLORS
all new sizes and colors appear in **BOLD**



FITTED
see fit samples on pg. 25



SEMI-FIT
see fit samples on pg. 25



LOOSE FIT
see fit samples on pg. 25

OT, SCORE. TEAM'S STORY.

Dye Migration. Augusta Sportswear cannot be held responsible for ink migration on polyester styles that can be attributed to poor ink quality or processing at temperatures exceeding those recommended by the ink manufacturer. **Dyeing.** Because of the variability of the dyeing process, we cannot guarantee perfect continuity of shade across all styles or from one order to the next. Jackets and pants are cut and offered for sale as separates, not as sets.

Decorating. All embellishment is for photography and catalog purposes only. All styles are sold blank with no decorations applied. Augusta Sportswear does not offer decorating services. For inquiries concerning how to achieve the best decorating results, please contact your ink and/or thread supplier for consultation.



LOOK FOR THIS "NEW" ICON THROUGHOUT OUR CATALOG TO FIND THE LATEST ADDITIONS TO OUR COLLECTION.



1180|1181 - PG. 6



1185|1186 - PG. 6



1085|1086 - PG. 15



1182 - PG. 20

NEW PRODUCTS

LARGEST SELECTION OF YOUTH AND LADIES SPECIFIC STYLES AND SIZES



1335|1336 - PG. 26



1320|1321 - PG. 26



1325|1326 - PG. 27



1330|1331 - PG. 29



5005|5006 - PG. 36



5091|5092 - PG. 38



1090|1091 - PG. 39



1092|1093 - PG. 39



4760 - PG. 48



4810|4811 - PG. 48



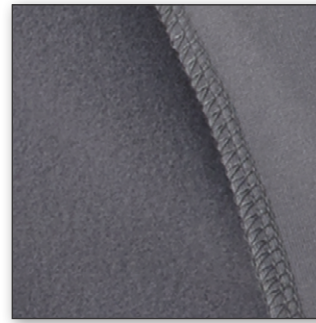
3730 - PG. 50



3732 - PG. 50

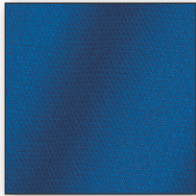
FABRIC GUIDE

LARGEST SELECTION OF HIGH PERFORMANCE, INNOVATIVE AND BASIC FABRIC TYPES TO CHOOSE FROM

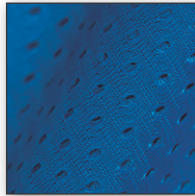


POLY/SPANDEX BRUSHED BACK KNIT

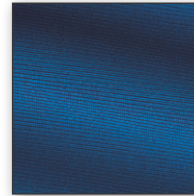
pg 48
90% polyester/10% spandex knit with brushed inner layer for a soft feel. Moisture management wicks sweat while 4-way stretch allows for ease of motion



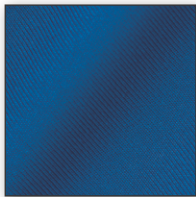
POLYESTER WICKING KNIT pg 6
100% polyester with moisture management to wick sweat



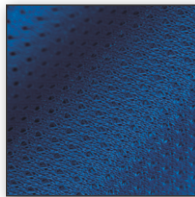
TRICOT MESH pg 12
100% polyester tricot knit mesh with the larger hole design used as a single inner or outer layer as well as a double layer of fabric



POLYESTER/SPANDEX KNIT pg 26
90% polyester/10% spandex odor resistant blend features 4-way stretch for ease of movement and moisture management to wick sweat



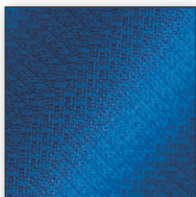
POLYESTER SMOOTH KNIT pg 7
Odor resistant 100% polyester smooth feel knit fabric with moisture management to wick sweat



MINI MESH pg 12
100% polyester mesh with a small hole design



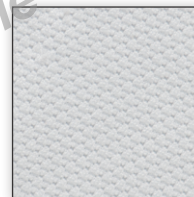
POLYESTER WICKING CLOSED HOLE MESH pg 31
100% polyester wicking mesh with a textured look



DUO KNIT pg 8
100% polyester textured tricot fabric with moisture management to wick sweat



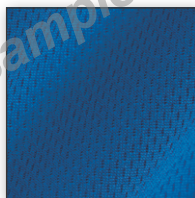
PINHOLE MESH pg 14
92% polyester/8% spandex mesh with 4-way stretch for increased mobility and moisture management to wick sweat



POLY/SPANDEX MESH INSERTS pg 35
Polyester/spandex mesh provides ventilation for breathability and comfort



POLYESTER DAZZLE pg 9
Shiny 100% polyester fabric



POLYESTER WICKING MESH pg 15
100% mesh fabric with moisture management to wick sweat

THE KEYS TO THE GAME

PLAN YOUR SALES STRATEGY WITH THESE GREAT MARKETING TOOLS

UNIFORM BUILDER
Online tool to dress out any team

CHOOSE YOUR COLOR



CHOOSE YOUR MASCOT OR UPLOAD YOUR OWN LOGO



CREATE A FLYER
Online tool to create sales flyers in minutes





NEW

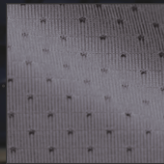
1180

CONFORMS TO NFHS REGULATIONS

1185

PINHOLE MESH INSERT

9-INCH (YOUTH INSEAM GRADED) PRO CUT



COORDINATING LADIES/GIRLS, STYLE 1182|1183 PG. 20

1180

1181



NEW

WINNING STREAK GAME JERSEY

100% polyester wicking knit • 92% polyester/8% spandex pinhole mesh side inserts • Heat sealed label • Self-fabric mitered V-neck collar • Contrast color stripes on sides • Conforms to NFHS regulations.

1180 ADULT: S-3XL

LIST PRICE 19.00 (UPCHARGE FOR 2XL-3XL)

1181 YOUTH: XS-L

LIST PRICE 17.00



1185

1186



PRO CUT

NEW

WINNING STREAK GAME SHORT

100% polyester wicking knit • 92% polyester/8% spandex pinhole mesh inserts • Full-cut • Covered elastic waistband with inside drawcord • Contrast color stripes on sides • 9-inch inseam • Youth inseam graded • Conforms to NFHS regulations.

1185 ADULT: S-3XL

LIST PRICE 19.90 (UPCHARGE FOR 2XL-3XL)

1186 YOUTH: XS-L

LIST PRICE 17.90



COORDINATING ADULT/YOUTH, STYLE 1085|1086 PG. 15



PLAY HARD & STAY DRY

**100% POLYESTER FABRIC
WICKS AWAY MOISTURE**

BENEFITS:

- Semi-fit jersey
- Wicks moisture
- Odor resistant
- Soft, smooth feel



1060

CONFORMS
TO NFHS
REGULATIONS

1065



BASELINE JERSEY

100% polyester wicking smooth knit • Odor resistant • Heat sealed label • Self-fabric collar • Conforms to NFHS regulations.

1060 ADULT: S-3XL

LIST PRICE 17.70
(UPCHARGE FOR 2XL-3XL)

1061 YOUTH: S-L

LIST PRICE 15.60



9-INCH
(YOUTH
INSEAM
GRADED)
PRO CUT



BASELINE SHORT

100% polyester wicking smooth knit • Odor resistant
• Full-cut • Heat sealed label • Covered elastic waistband
with inside drawcord • 9-inch inseam • Youth inseam graded.

1065 ADULT: S-3XL

LIST PRICE 15.90
(UPCHARGE FOR 2XL-3XL)

1066 YOUTH: S-L

LIST PRICE 13.90

CONFORMS TO NFHS REGULATIONS



9-INCH (YOUTH INSEAM GRADED) PRO CUT

1040

1041



TRIPLE-DOUBLE GAME JERSEY

100% polyester wicking knit with 100% polyester wicking Duo Knit inserts • Wicks moisture • Heat sealed label • Rib-knit collar • Contrast color side inserts • Conforms to NFHS regulations.

1040 ADULT: S-3XL

LIST PRICE 19.90 (UPCHARGE FOR 2XL-3XL)

1041 YOUTH: S-L

LIST PRICE 17.90



1045

1046



TRIPLE-DOUBLE GAME SHORT

100% polyester wicking knit with 100% polyester wicking Duo Knit inserts • Wicks moisture • Full-cut • Covered elastic waistband with inside drawcord • Contrast color side inserts • 9-inch inseam • Youth inseam graded.

1045 ADULT: S-3XL

LIST PRICE 21.90

(UPCHARGE FOR 2XL-3XL)

1046 YOUTH: S-L

LIST PRICE 19.90

CONFORMS TO NFHS REGULATIONS



9-INCH (YOUTH INSEAM GRADED) PRO CUT

722

724



WICKING DUO KNIT GAME JERSEY

100% polyester wicking Duo Knit • Heat sealed label • Rib-knit collar with contrast color insert • Contrast color side panels with contrast insert • Conforms to NFHS regulations.

722 ADULT: S-3XL

LIST PRICE 23.00 (UPCHARGE FOR 2XL-3XL)

724 YOUTH: M-L

LIST PRICE 20.90



757

758



WICKING DUO KNIT GAME SHORT

100% polyester wicking Duo Knit • Full-cut • Covered elastic waistband with inside drawcord • Contrast color side inserts • 9-inch inseam • Youth inseam graded.

757 ADULT: S-3XL

LIST PRICE 24.50 (UPCHARGE FOR 2XL-3XL)

758 YOUTH: M-L

LIST PRICE 22.80



9-INCH
(YOUTH
INSEAM
GRADED)
PRO CUT

775

778

TRI-COLOR DAZZLE GAME JERSEY

100% polyester dazzle fabric • Tipped rib-knit V-neck collar and armholes
• Contrast tri-color side inserts with accent piping.

775 ADULT: S-3XL LIST PRICE 22.50 (UPCHARGE FOR 2XL-3XL)
778 YOUTH: S-L LIST PRICE 19.40



715

716

PRO
CUT

TRI-COLOR DAZZLE GAME SHORT

100% polyester dazzle fabric • Full-cut • Covered elastic waistband with inside drawcord • Contrast tri-color side inserts with accent piping • 9-inch inseam • Youth inseam graded.

715 ADULT: S-3XL LIST PRICE 17.30 (UPCHARGE FOR 2XL-3XL)
716 YOUTH: S-L LIST PRICE 16.00



9-INCH
(YOUTH
INSEAM
GRADED)
PRO CUT

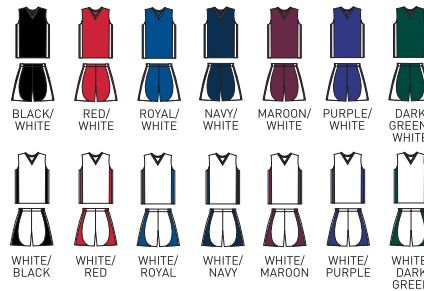
781

782

DAZZLE/MESH JERSEY

100% polyester dazzle fabric body and stripes with two layers of 100% polyester tricot mesh side inserts • Contrast color rib-knit V-neck collar
• Contrast color mesh side inserts with accent dazzle stripes.

781 ADULT: S-3XL LIST PRICE 20.60 (UPCHARGE FOR 2XL-3XL)
782 YOUTH: M-L LIST PRICE 18.00



717

719

PRO
CUT

DAZZLE/MESH SHORT

100% polyester dazzle fabric body and stripes with two layers of 100% polyester tricot mesh side inserts • Full-cut • Covered elastic waistband with inside drawcord • Contrast color mesh side inserts with accent dazzle stripes • 9-inch inseam • Youth inseam graded.

717 ADULT: S-3XL LIST PRICE 19.60 (UPCHARGE FOR 2XL-3XL)
719 YOUTH: M-L LIST PRICE 18.00



FULLY REVERSIBLE

GAME CHANGER

FULLY REVERSIBLE FOR TWO LOOKS IN ONE

1170

CONFORMS TO NFHS REGULATIONS

1175

9-INCH (YOUTH INSEAM GRADED) PRO CUT

1170 1171



SLAM DUNK JERSEY

Color side is 100% polyester wicking knit • White side is 100% polyester tricot mesh • Fully reversible • Self-fabric mitered V-neck collar • Contrast color piping in shoulder seam • Each layer has contrast color side inserts • Each layer hemmed separately for embellishment • Outside locker label • Conforms to NFHS regulations.

1170 ADULT: S-3XL LIST PRICE 25.00 (UPCHARGE FOR 2XL-3XL)
1171 YOUTH: S-L LIST PRICE 23.00



1175 1176



SLAM DUNK SHORT

Color side is 100% polyester wicking knit • White side is 100% polyester tricot mesh • Fully reversible • Full-cut • Covered elastic waistband with inside drawcord • Each layer has contrast color side inserts • Each layer hemmed separately for embellishment • 9-inch inseam • Youth inseam graded.

1175 ADULT: S-3XL LIST PRICE 25.00 (UPCHARGE FOR 2XL-3XL)
1176 YOUTH: S-L LIST PRICE 23.00



FULLY REVERSIBLE

CONFORMS TO NFHS REGULATIONS

9-INCH (YOUTH INSEAM GRADED) PRO CUT



COORDINATING LADIES REVERSIBLE JERSEY, STYLE 687 PG. 23

685

686



REVERSIBLE WICKING GAME JERSEY

Color side is 100% polyester wicking knit • White side is 100% polyester wicking tricot • Fully reversible • Self-fabric V-neck collar • Each layer has two contrast color V-shaped side panels • Each layer hemmed separately for embellishment • Outside locker label • Conforms to NFHS regulations.

685

ADULT: S-3XL

LIST PRICE 32.40 (UPCHARGE FOR 2XL-3XL)

686

YOUTH: S-L

LIST PRICE 31.00



691

692



PRO CUT

REVERSIBLE WICKING GAME SHORT

Color side is 100% polyester wicking knit • White side is 100% polyester wicking tricot • Fully reversible • Full-cut • Covered elastic waistband with inside drawcord • Each layer has two contrast color V-shaped side panels • 9-inch inseam • Youth inseam graded.

691

ADULT: S-3XL

LIST PRICE 34.50 (UPCHARGE FOR 2XL-3XL)

692

YOUTH: S-L

LIST PRICE 33.20



FULLY REVERSIBLE JERSEY

9-INCH (YOUTH INSEAM GRADED) PRO CUT



755

756

REVERSIBLE DAZZLE JERSEY

Two layers of 100% polyester dazzle fabric • Fully reversible • Rib-knit V-neck collar • Each layer has contrast color side panel with stripe • Each layer finished separately for embellishment • Outside locker label.

755

ADULT: S-3XL

LIST PRICE 26.40 (UPCHARGE FOR 2XL-3XL)

756

YOUTH: S-L

LIST PRICE 23.60



923

924

PRO CUT

STRIPED DAZZLE SHORT

100% polyester dazzle fabric • Full-cut • Covered elastic waistband with inside drawcord • Contrast color side inserts and contrast accent stripes • 9-inch inseam • Youth inseam graded.

923

ADULT: S-3XL

LIST PRICE 16.70 (UPCHARGE FOR 2XL-3XL)

924

YOUTH: S-L

LIST PRICE 15.20



COORDINATING LADIES, STYLE 146 PG. 23

197

198

TRICOT MESH REVERSIBLE TANK

Two layers of 100% polyester tricot mesh • Fully reversible • Bottom hem finished separately for embellishment • Outside locker label.

197 ADULT: S-3XL

LIST PRICE 14.50 (UPCHARGE FOR 2XL-3XL)

198 YOUTH: S-L

LIST PRICE 13.40



195

196

TRICOT MESH/DAZZLE REVERSIBLE JERSEY

100% polyester tricot mesh outer layer • 100% polyester dazzle fabric inner layer • Fully reversible • Rib-knit V-neck collar • Each layer finished separately for embellishment • Outside locker label.

195 ADULT: S-3XL

LIST PRICE 21.00 (UPCHARGE FOR 2XL-3XL)

196 YOUTH: S-L

LIST PRICE 18.20



136

137

NEW YOUTH SIZE XS

REVERSIBLE MINI MESH LEAGUE TANK

Two layers of 100% polyester mini mesh • Fully reversible • Bottom hem finished separately for embellishment • Outside locker label.

136 ADULT: S-3XL

LIST PRICE 16.00 (UPCHARGE FOR 2XL-3XL)

137 YOUTH: XS-L

LIST PRICE 13.80



133 / **134**

MINI MESH SINGLET

One layer of 100% polyester mini mesh.

133 ADULT: S-3XL LIST PRICE 9.50
(UPCHARGE FOR 2XL-3XL)
134 YOUTH: S-L LIST PRICE 8.20



180 / **181**

POLY/COTTON ATHLETIC TANK

50% polyester/50% cotton jersey knit • Self-fabric binding at neck and armholes.

180 ADULT: S-3XL LIST PRICE 9.80
(UPCHARGE FOR 2XL-3XL)
181 YOUTH: S-L LIST PRICE 7.10



203 / **204**

SHOOTER SHIRT

50% polyester/50% cotton jersey knit • Rib-knit collar.

203 ADULT: S-3XL LIST PRICE 9.00
(UPCHARGE FOR 2XL-3XL)
204 YOUTH: S-L LIST PRICE 7.40

* Available in 3XL.





BENEFITS:

- Wicks moisture
- Odor resistant
- Increased mobility
- Softer feel

1010

1011



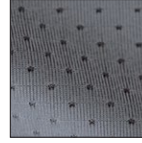
ELITE JERSEY

100% polyester wicking smooth knit • Odor resistant • Heat sealed label
• Self-fabric collar • Set-in sleeves.

1010 ADULT: S-3XL LIST PRICE 14.90 (UPCHARGE FOR 2XL-3XL)
1011 YOUTH: S-L LIST PRICE 13.50



PINHOLE MESH PERFORMANCE FABRIC



BENEFITS:

- Extremely soft feel
- Full coverage breathability
- Lightweight
- 4-way stretch flexibility

1070

1071



EXA SHORT SLEEVE CREW

92% polyester/8% spandex wicking pinhole mesh • Heat sealed label
• Self-fabric collar • Set-in sleeves with shoulder inserts.

1070 ADULT: S-3XL LIST PRICE 15.90 (UPCHARGE FOR 2XL-3XL)
1071 YOUTH: S-L LIST PRICE 13.90



NEW COLORS

NEW LOWER PRICE

BENEFIT:

Wicks moisture

**COORDINATING LADIES/GIRLS,
STYLE 1790|1791 PG. 34**

790

791

NEW YOUTH SIZE XS



WICKING T-SHIRT

100% polyester wicking knit • Heat sealed label • Self-fabric collar • Set-in sleeves.

790 ADULT: S-4XL CALL FOR PRICE
791 YOUTH: XS-L

* Available in 4XL



783



WICKING SHOOTER SHIRT

100% polyester wicking knit • Heat sealed label
• Self-fabric collar.

783 ADULT: S-3XL LIST PRICE 11.10 (UPCHARGE FOR 2XL-3XL)





NEW



PINHOLE MESH BACK

1085



PINHOLE MESH INSERT & BACK



1185

1085 1086



WINNING STREAK LONG SLEEVE JERSEY

100% polyester wicking knit • 92% polyester/8% spandex pinhole mesh back and inserts • Heat sealed label • Self-fabric collar • Set-in sleeves with self-fabric cuffs • Contrast color piping on shoulder and front • Contrast color inserts on front.

1085 ADULT: S-3XL LIST PRICE 29.00 (UPCHARGE FOR 2XL-3XL)

1086 YOUTH: S-L LIST PRICE 27.00



BLACK/WHITE



RED/WHITE



ROYAL/WHITE



NAVY/WHITE



ORANGE/WHITE



MAROON/WHITE



DARK GREEN/WHITE



GRAPHITE/WHITE

PERFORMANCE FABRIC

WICKS AWAY MOISTURE TO KEEP PLAYERS DRY & COMFORTABLE



4600 4601



WICKING LONG SLEEVE WARMUP SHIRT

100% polyester wicking mesh • Heat sealed label • Tipped rib-knit lap-over collar • Contrast color accent piping on front shoulder • Contrast color sleeve and side inserts • Set-in sleeves • Self-fabric cuffs.

4600 ADULT: XS-3XL LIST PRICE 29.40 (UPCHARGE FOR 2XL-3XL)

4601 YOUTH: S-L LIST PRICE 27.30



BLACK/WHITE



RED/WHITE



ROYAL/WHITE



NAVY/WHITE



MAROON/WHITE



PURPLE/WHITE



DARK GREEN/WHITE



NEW COLORS

COORDINATING LADIES,
STYLE 4752 PG. 48

4750



SYNERGY PULLOVER

90% polyester/10% spandex knit • Wicks moisture • Heat sealed label • Half-zip pullover style • Raglan sleeves with contrast color inserts • Self-fabric cuffs • Dropped tail.

4750 ADULT: XS-3XL LIST PRICE 43.90 (UPCHARGE FOR 2XL-3XL)



BLACK/BLACK NEW GRAPHITE/GRAPHITE NEW BLACK/WHITE RED/WHITE ROYAL/WHITE NAVY/WHITE MAROON/WHITE PURPLE/WHITE DARK GREEN/WHITE GRAPHITE/WHITE



1005

1006



APEX LONG SLEEVE CREW

100% polyester wicking smooth knit • Odor resistant • Heat sealed label • Self-fabric collar and cuffs • Set-in sleeves.

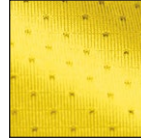
1005 ADULT: S-3XL LIST PRICE 19.90 (UPCHARGE FOR 2XL-3XL)

1006 YOUTH: S-L LIST PRICE 17.30



BLACK WHITE RED ROYAL NAVY GOLD SILVER GREY

PINHOLE MESH PERFORMANCE FABRIC



Pinhole mesh fabric provides unparalleled functionality with key high performance features and benefits.



1080



EXA LONG SLEEVE CREW

92% polyester/8% spandex wicking pinhole mesh • Heat sealed label • Self-fabric collar and cuffs • Set-in sleeves with shoulder inserts.

1080 ADULT: S-3XL LIST PRICE 21.00 (UPCHARGE FOR 2XL-3XL)



BLACK WHITE RED ROYAL NAVY GRAPHITE POWER YELLOW



788

789



WICKING LONG SLEEVE T-SHIRT

100% polyester wicking knit • Heat sealed label • Self-fabric collar and cuffs • Set-in sleeves.

788 ADULT: S-3XL LIST PRICE 15.90 (UPCHARGE FOR 2XL-3XL)

789 YOUTH: S-L LIST PRICE 13.90



BLACK WHITE RED ROYAL NAVY ORANGE MAROON GOLD PURPLE KELLY DARK GREEN VEGAS GOLD SILVER GREY

11-INCH
PRO CUT



865

PRO CUT

EXTRA LONG TRICOT MESH SHORT

Two layers of 100% polyester tricot mesh • Full-cut • Covered elastic waistband with inside drawcord • 11-inch inseam.

865

ADULT: S-3XL

LIST PRICE 18.60 (UPCHARGE FOR 2XL-3XL)



9-INCH
(YOUTH
INSEAM
GRADED)
PRO CUT



848

849

PRO CUT

LONG TRICOT MESH SHORT/TRICOT LINED

Outer layer of 100% polyester tricot mesh • Inner layer of 100% polyester tricot lining • Full-cut • Elastic waistband with inside drawcord • 9-inch inseam • Youth inseam graded.

848

ADULT: S-5XL

LIST PRICE 13.00 (UPCHARGE FOR 2XL-5XL)

849

YOUTH: S-L

LIST PRICE 11.90



7-INCH
(YOUTH
INSEAM
GRADED)



842

843

TRICOT MESH SHORT/TRICOT LINED

Outer layer of 100% polyester tricot mesh • Inner layer of 100% polyester tricot lining • Elastic waistband with inside drawcord • 7-inch inseam • Youth inseam graded.

842

ADULT: S-5XL

LIST PRICE 11.00 (UPCHARGE FOR 2XL-5XL)

843

YOUTH: S-L

LIST PRICE 9.90



9-INCH
(YOUTH
INSEAM
GRADED)



738 **739**

LONGER LENGTH MINI MESH LEAGUE SHORT

Two layers of 100% polyester mini mesh • Elastic waistband with inside drawcord • 9-inch inseam • Youth inseam graded.

738 ADULT: S-3XL LIST PRICE 13.50
(UPCHARGE FOR 2XL-3XL)
739 YOUTH: S-L LIST PRICE 12.20



7-INCH
(YOUTH
INSEAM
GRADED)



733 **734**

MINI MESH LEAGUE SHORT

Two layers of 100% polyester mini mesh • Elastic waistband with inside drawcord • 7-inch inseam • Youth inseam graded.

733 ADULT: S-3XL LIST PRICE 13.00
(UPCHARGE FOR 2XL-3XL)
734 YOUTH: XS-L LIST PRICE 12.20



9-INCH
(YOUTH
INSEAM
GRADED)
PRO CUT



802 **809**  

LONGER LENGTH WICKING MESH ATHLETIC SHORT

100% polyester wicking mesh • Full-cut • Covered elastic waistband with inside drawcord • 9-inch inseam • Youth inseam graded.

802 ADULT: S-4XL LIST PRICE 13.60
(UPCHARGE FOR 2XL-4XL)
809 YOUTH: S-L LIST PRICE 11.70



7-INCH
(YOUTH
INSEAM
GRADED)
PRO CUT



805 **806**  

WICKING MESH ATHLETIC SHORT

100% polyester wicking mesh • Full-cut • Covered elastic waistband with inside drawcord • 7-inch inseam • Youth inseam graded.

805 ADULT: S-3XL LIST PRICE 11.90
(UPCHARGE FOR 2XL-3XL)
806 YOUTH: S-L LIST PRICE 11.40



9-INCH
(YOUTH
INSEAM
GRADED)
PRO CUT



NEW LOWER PRICE

1420

1421



PRO CUT

TRAINING SHORT

100% polyester wicking knit • Wicks moisture • Full-cut • Heat sealed label • Covered elastic waistband with inside drawcord • 9-inch inseam • Youth inseam graded.

1420 ADULT: S-3XL

CALL FOR PRICE

1421 YOUTH: S-L



7-INCH
(YOUTH
INSEAM
GRADED)
PRO CUT



NEW LOWER PRICE

1425

1426



PRO CUT

OCTANE SHORT

100% polyester wicking knit • Wicks moisture • Full-cut • Heat sealed label • Covered elastic waistband with inside drawcord • 7-inch inseam • Youth inseam graded.

1425 ADULT: S-3XL

CALL FOR PRICE

1426 YOUTH: XS-L



9-INCH
(YOUTH
INSEAM
GRADED)



926

927

LONG DAZZLE SHORT

100% polyester dazzle fabric • Covered elastic waistband with inside drawcord • 9-inch inseam • Youth inseam graded.

926 ADULT: S-4XL

LIST PRICE 13.70
(UPCHARGE FOR 2XL-4XL)

927 YOUTH: S-L

LIST PRICE 12.50



7-INCH
(YOUTH
INSEAM
GRADED)



920

921

DAZZLE SHORT

100% polyester dazzle fabric • Covered elastic waistband with inside drawcord • 7-inch inseam • Youth inseam graded.

920 ADULT: S-3XL

LIST PRICE 12.30
(UPCHARGE FOR 2XL-3XL)

921 YOUTH: S-L

LIST PRICE 11.50

* Light Pink not available in 3XL.





RACERBACK

PINHOLE MESH INSERT



COORDINATING ADULT/YOUTH, STYLES 1180|1181 PG. 6

1182

1183



LADIES WINNING STREAK RACERBACK JERSEY

100% polyester wicking knit • 92% polyester/8% spandex pinhole mesh side inserts • Ladies' fit • Heat sealed label • Self-fabric mitered V-neck collar • Contrast color stripes on sides • Racerback styling • Conforms to NFHS regulations.

1182 LADIES: S-2XL

LIST PRICE 17.00 (UPCHARGE FOR 2XL)

1183 GIRLS: S-L

LIST PRICE 15.00



1182

CONFORMS TO NFHS REGULATIONS



1185

9-INCH (YOUTH INSEAM GRADED) PRO CUT



1185

1186



PRO CUT



WINNING STREAK GAME SHORT

100% polyester wicking knit • 92% polyester/8% spandex pinhole mesh inserts • Full-cut • Covered elastic waistband with inside drawcord • Contrast color stripes on sides • 9-inch inseam • Youth inseam graded • Conforms to NFHS regulations.

1185 ADULT: S-3XL

LIST PRICE 19.90 (UPCHARGE FOR 2XL-3XL)

1186 YOUTH: XS-L

LIST PRICE 17.90



7-INCH

732

854

855



LADIES WICKING MESH ENDURANCE JERSEY

100% polyester wicking mesh • Ladies' fit • Heat sealed label • Contrast color self-fabric neck • Contrast color shoulder and side inserts.

854 LADIES: S-2XL

LIST PRICE 22.90 (UPCHARGE FOR 2XL)

855 GIRLS: S-L

LIST PRICE 20.80



Sample Sample Sample Sample Sample Sample



7-INCH

527

528



LADIES WICKING MESH POWERHOUSE JERSEY

100% polyester wicking mesh • Ladies' fit • Heat sealed label • Two-color self-fabric V-neck collar • Contrast color side panels.

527 LADIES: S-2XL

LIST PRICE 17.90 (UPCHARGE FOR 2XL)

528 GIRLS: S-L

LIST PRICE 15.90



732



LADIES WICKING MESH GAME SHORT

100% polyester wicking mesh • Ladies' fit • Covered elastic waistband with inside drawcord • Contrast color side panels • 7-inch inseam.

732 LADIES: S-2XL

LIST PRICE 16.40 (UPCHARGE FOR 2XL)

951

952

**LADIES WICKING DUO KNIT ATTACK JERSEY**

100% polyester wicking Duo Knit • Ladies' fit • Heat sealed label
 • Two-color modified self-fabric V-neck collar • Two-color side panels with triangular contrast insert • Conforms to NFHS regulations.

951

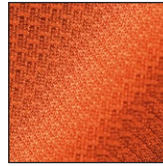
LADIES: S-2XL

LIST PRICE 21.90 (UPCHARGE FOR 2XL)

952

GIRLS: S-L

LIST PRICE 19.90

WICKING
DUO KNITCONFORMS
TO NFHS
REGULATIONS7-INCH
(GIRLS
INSEAM
GRADED)

972

975

**LADIES WICKING DUO KNIT ATTACK SHORT**

100% polyester wicking Duo Knit • Ladies' fit • Covered elastic waistband with inside drawcord • Two-color side panels with triangular contrast insert • 7-inch inseam • Girls inseam graded.

972

LADIES: S-2XL

LIST PRICE 19.20 (UPCHARGE FOR 2XL)

975

GIRLS: S-L

LIST PRICE 18.40



RACERBACK

CONFORMS
TO NFHS
REGULATIONS

928

929

**LADIES WICKING DUO KNIT CRUSH JERSEY**

100% polyester wicking Duo Knit • Ladies' fit • Heat sealed label • Contrast color self-fabric V-neck collar • Two-color side panels with triangular accent panel • Racerback styling • Conforms to NFHS regulations.

928

LADIES: S-2XL

LIST PRICE 19.90 (UPCHARGE FOR 2XL)

929

GIRLS: S-L

LIST PRICE 17.90



972

7-INCH
(GIRLS
INSEAM
GRADED)

**COORDINATING ADULT/YOUTH,
STYLE 685|686 PG. 11**

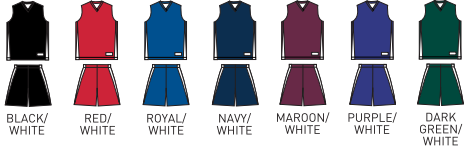
687



LADIES REVERSIBLE WICKING GAME JERSEY

Color side is 100% polyester wicking knit • White side is 100% polyester wicking tricot • Ladies' fit • Fully reversible • Self-fabric V-neck collar • Each layer has two contrast color V-shaped side panels • Each layer hemmed separately for embellishment • Outside locker label • Conforms to NFHS regulations.

687 LADIES: S-2XL LIST PRICE 32.40 (UPCHARGE FOR 2XL)



BLACK/WHITE RED/WHITE ROYAL/WHITE NAVY/WHITE MAROON/WHITE PURPLE/WHITE DARK GREEN/WHITE

691

692



PRO CUT

REVERSIBLE WICKING GAME SHORT

Color side is 100% polyester wicking knit • White side is 100% polyester wicking tricot • Fully reversible • Full-cut • Covered elastic waistband with inside drawcord • Each layer has two contrast color V-shaped side panels • 9-inch inseam • Youth inseam graded.

691 ADULT: S-3XL LIST PRICE 34.50 (UPCHARGE FOR 2XL-3XL)

692 YOUTH: S-L LIST PRICE 33.20



FULLY REVERSIBLE



CONFORMS TO NFHS REGULATIONS

9-INCH (YOUTH INSEAM GRADED) PRO CUT



**COORDINATING ADULT/YOUTH,
STYLE 197|198 PG. 12**



146

LADIES TRICOT MESH REVERSIBLE TANK

Two layers of 100% polyester tricot mesh • Ladies' fit • Fully reversible • Bottom hem finished separately for embellishment • Outside locker label.

146 LADIES: S-2XL LIST PRICE 15.90 (UPCHARGE FOR 2XL)



BLACK/WHITE RED/WHITE ROYAL/WHITE COLUMBIA BLUE/WHITE NAVY/WHITE MAROON/WHITE PURPLE/WHITE DARK GREEN/WHITE RED/BLACK BLACK/GOLD NAVY/GOLD

138

135

LADIES REVERSIBLE MINI MESH LEAGUE TANK

Two layers of 100% polyester mini mesh • Ladies' fit • Fully reversible • Bottom hem finished separately for embellishment • Outside locker label.

138 LADIES: S-2XL LIST PRICE 16.00 (UPCHARGE FOR 2XL)

135 GIRLS: S-L LIST PRICE 14.00



BLACK/WHITE RED/WHITE ROYAL/WHITE COLUMBIA BLUE/WHITE NAVY/WHITE ORANGE/WHITE MAROON/WHITE GOLD/WHITE PURPLE/WHITE KELLY/WHITE DARK GREEN/WHITE RED/BLACK



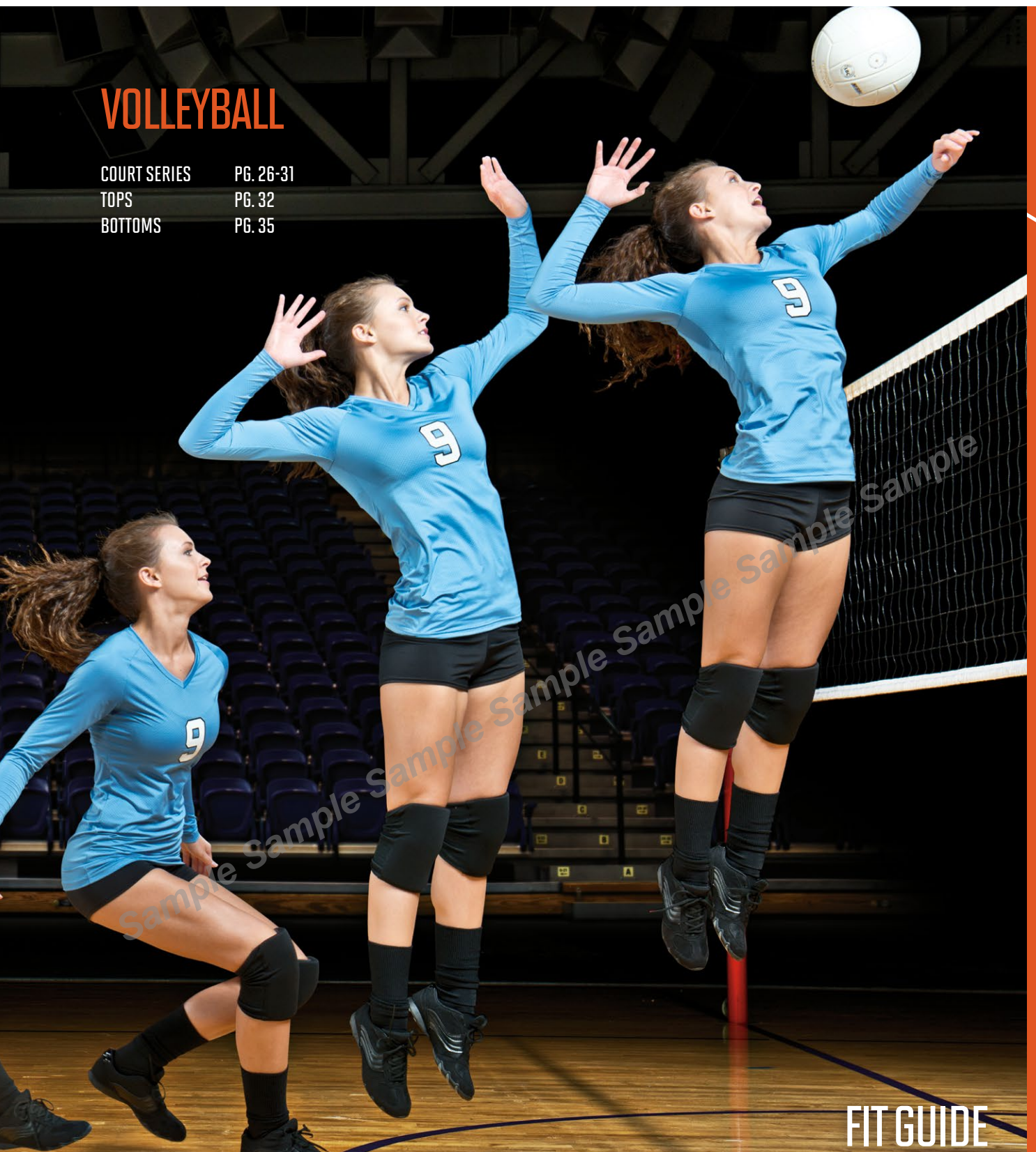
EVERY SPIKE THAT HITS THE LINE

KALEY TURNER FOX CREEK HIGH SCHOOL VOLLEYBALL TEAM

Kaley, a middle hitter, is the only freshman that has made the Fox Creek varsity team. With Kaley as a starter both her freshman and sophomore years, the team went on to win their region both years, and rank second in the state. As a rising junior, Kaley's been appointed team captain at Fox Creek. "You have to play as a team and not as an individual to be successful. We play for each other and we perform better because of it. It all starts and ends with our team."

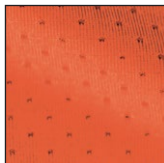
VOLLEYBALL

COURT SERIES PG. 26-31
TOPS PG. 32
BOTTOMS PG. 35



FIT GUIDE





PINHOLE MESH



1320

1335
4-INCH

COURT SERIES

PG. 26-31

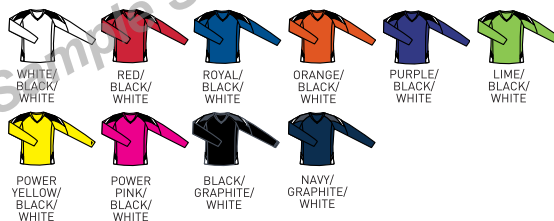
1320 1321



LADIES SET JERSEY

92% polyester/8% spandex wicking pinhole mesh • Ladies' fit • Heat sealed label • Self-fabric V-neck collar • Raglan sleeves • Contrast two-color shoulder inserts and side panels.

1320 LADIES: S-2XL LIST PRICE 24.50 (UPCHARGE FOR 2XL)
 1321 GIRLS: S-L LIST PRICE 22.50



1335 1336



LADIES STRIDE SHORT

90% polyester/10% spandex knit • Odor resistant • Wicks moisture • Ladies' fit • Heat sealed label • Low rise • Wide flat waistband for secure fit and comfort • No front seam • U-shaped gusset • Flat lock stitching • Contrast color side inserts • 4-inch inseam.

1335 LADIES: S-2XL LIST PRICE 17.00 (UPCHARGE FOR 2XL)
 1336 GIRLS: S-L LIST PRICE 15.00





BACK

1325 1326   



LADIES DIG JERSEY

92% polyester/8% spandex wicking pinhole mesh • Ladies' fit
• Heat sealed label • Self-fabric V-neck collar • Contrast color
inserts wrapping around the sleeve and on the side panel.

1325 LADIES: S-2XL LIST PRICE 24.50
(UPCHARGE FOR 2XL)

1326 GIRLS: S-L LIST PRICE 22.50



CREATE A FLYER

CHOOSE YOUR COLOR

CHOOSE YOUR MASCOT OR UPLOAD YOUR OWN LOGO

1040 | TRIPLE-DOUBLE GAME JERSEY

*With 30% polyester wicking knit with 70% polyester mesh for added breathability. *Wide moisture wicking fabric. *Heat sealed collar. *Self-fabric V-neck collar. *Contrast color side inserts. *Double-needle hemmed sleeves and bottom. *Available in sizes: S, M, L, XL, 2XL.



Quickly & easily create personalized custom flyers. See page 5 for details
or visit augustasportswear.com/marketingtools.



1325

1335
4-INCH

COOL COMFORT

**BREATHABLE WICKING FABRIC
FLEXES TO LET ATHLETES MOVE FREELY**

BENEFITS:

- Extremely soft feel
- Full coverage breathability
- Lightweight
- 4-way stretch flexibility

1305



LADIES SPIKE JERSEY

92% polyester/8% spandex wicking pinhole mesh • Wicks moisture • Ladies' fit • Heat sealed label • Self-fabric V-neck collar • Contrast color raglan sleeves and side inserts • 27-inch graded body length.

1305 LADIES: XS-2XL LIST PRICE 24.50 (UPCHARGE FOR 2XL)



742

743



LADIES POLY/SPANDEX 4" SHORT

90% polyester/10% spandex knit • Odor resistant • Wicks moisture • Ladies' fit • Heat sealed label • Flatlock seamed construction for extra comfort • Low rise • Covered elastic waistband • No side seams • Two-ply gusset • 4-inch inseam • Girls inseam graded.

742 LADIES: S-2XL LIST PRICE 15.80 (UPCHARGE FOR 2XL)

743 GIRLS: S-L LIST PRICE 14.00



PINHOLE MESH



1305

742

4-INCH
(GIRLS
INSEAM
GRADED)

**SEE OUR VOLLEYBALL COLLECTION AT
AUGUSTASPORTSWEAR.COM/COURT SERIES**

1330

1331



LADIES ASSIST JERSEY

92% polyester/8% spandex wicking pinhole mesh • Ladies' fit
• Heat sealed label • Self-fabric V-neck collar • Raglan sleeves.

1330 LADIES: S-2XL LIST PRICE 19.00
(UPCHARGE FOR 2XL)

1331 GIRLS: S-L LIST PRICE 17.00



1210

1211



LADIES POLY/SPANDEX 2.5" SHORT

90% polyester/10% spandex knit • Odor resistant
• Wicks moisture • Ladies' fit • Heat sealed label • Low rise
• Covered elastic waistband • No side seams
• 2½-inch inseam.

1210 LADIES: S-2XL LIST PRICE 15.60
(UPCHARGE FOR 2XL)

1211 GIRLS: XS-L LIST PRICE 14.00



VOLLEYBALL/COURT SERIES

1210

2½-INCH



THREE-NEEDLE COVERSTITCHING



4650



LADIES WICKING MESH CHARGER JERSEY

100% polyester wicking mesh • Ladies' fit • Heat sealed label • Self-fabric V-neck collar with contrast color three-needle coverstitching • Contrast color front and back sleeve inserts with contrast three-needle coverstitching.

4650 LADIES: XS-2XL LIST PRICE 24.20 (UPCHARGE FOR 2XL)



AUGUSTASPORTSWEAR.COM

COURT SERIES



1310

1210
2½-INCH

1310 1311   

LADIES HIT JERSEY

92% polyester/8% spandex wicking pinhole mesh • Wicks moisture • Ladies' fit • Heat sealed label • Contrasting self-fabric V-neck collar • Set-in sleeves • Contrasting side panel with white triangular insert at hem • 27-inch graded body length.

1310 LADIES: S-2XL LIST PRICE 17.00 (UPCHARGE FOR 2XL)
1311 GIRLS: S-L LIST PRICE 15.00



1300

1210
2½-INCH

1300 1301   

LADIES MVP JERSEY

92% polyester/8% spandex wicking pinhole mesh • Wicks moisture • Ladies' fit • Heat sealed label • Self-fabric V-neck collar • Raglan sleeves with contrast color inserts • 27-inch graded body length.

1300 LADIES: S-2XL LIST PRICE 17.20 (UPCHARGE FOR 2XL)
1301 GIRLS: S-L LIST PRICE 15.20



1210 1211   

LADIES POLY/SPANDEX 2.5" SHORT

90% polyester/10% spandex knit • Odor resistant • Wicks moisture • Ladies' fit • Heat sealed label • Low rise • Covered elastic waistband • No side seams • 2½-inch inseam.

1210 LADIES: S-2XL LIST PRICE 15.60 (UPCHARGE FOR 2XL)
1211 GIRLS: XS-L LIST PRICE 14.00



1220

1221

**LADIES CHALLENGE JERSEY**

90% polyester/10% spandex knit • 93% polyester/7% spandex neck and mesh inserts • Odor resistant • Wicks moisture • Ladies' fit • Heat sealed label • White poly/spandex mesh V-neck collar • White poly/spandex mesh side inserts for breathability.

1220 LADIES: S-2XL

LIST PRICE 21.90 (UPCHARGE FOR 2XL)

1221 GIRLS: S-L

LIST PRICE 19.90

BLACK/
WHITEWHITE/
WHITERED/
WHITEROYAL/
WHITENAVY/
WHITEMAROON/
WHITEPURPLE/
WHITEDARK
GREEN/
WHITEMESH INSERT
NECK AND SIDES

1204

1205

**LADIES RALLY JERSEY**

100% polyester wicking smooth knit • Odor resistant • Ladies' fit • Heat sealed label • Self-fabric V-neck collar with accent piping at bottom • Set-in cap sleeves.

1204 LADIES: S-2XL

LIST PRICE 15.90 (UPCHARGE FOR 2XL)

1205 GIRLS: S-L

LIST PRICE 13.90

WHITE/
BLACKBLACK/
WHITERED/
WHITEROYAL/
WHITENAVY/
WHITEORANGE/
WHITEMAROON/
WHITEGOLD/
WHITEPURPLE/
WHITEKELLY/
WHITEDARK
GREEN/
WHITEPOWER
PINK/
WHITE

1230

**LADIES MATCH JERSEY**

100% polyester wicking closed hole mesh • Ladies' fit • Heat sealed label • Self-fabric V-neck and collar • Contrast color shoulder inserts • Self-fabric armholes.

1230 LADIES: S-2XL

LIST PRICE 15.50 (UPCHARGE FOR 2XL)

BLACK/
WHITEWHITE/
WHITERED/
WHITEROYAL/
WHITENAVY/
WHITEORANGE/
WHITEMAROON/
WHITEPURPLE/
WHITEDARK
GREEN/
WHITEPINK/
WHITE



1235

1236



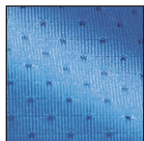
LADIES TRIUMPH JERSEY

100% polyester wicking smooth knit • 100% polyester wicking Duo Knit inserts
 • Odor resistant • Ladies' fit • Heat sealed label • Contrast color Duo Knit V-neck collar • Contrast color front and back Duo Knit inserts.

1235 LADIES: S-2XL LIST PRICE 17.90 (UPCHARGE FOR 2XL)
 1236 GIRLS: S-L LIST PRICE 15.90



PINHOLE MESH PERFORMANCE FABRIC



1355

1356



LADIES TORNADO JERSEY

92% polyester/8% spandex pinhole mesh • Wicks moisture • Ladies' fit • Heat sealed label • Contrast color self-fabric V-neck collar • Two-color triangular front panels at bottom hem.

1355 LADIES: S-2XL LIST PRICE 17.90 (UPCHARGE FOR 2XL)
 1356 GIRLS: S-L LIST PRICE 15.90



PINHOLE MESH PERFORMANCE FABRIC



1350

1351



LADIES STORM JERSEY

92% polyester/8% spandex pinhole mesh • Wicks moisture • Ladies' fit • Heat sealed label
 • Self-fabric V-neck collar • Contrast color piping on forward shoulder and side seam.

1350 LADIES: S-2XL LIST PRICE 13.90 (UPCHARGE FOR 2XL)
 1351 GIRLS: S-L LIST PRICE 12.90



PINHOLE MESH PERFORMANCE FABRIC



Pinhole mesh fabric provides unparalleled functionality with key high performance features and benefits.



RACERBACK

1290

1291



LADIES INFERNO JERSEY

92% polyester/8% spandex pinhole mesh • Wicks moisture • Ladies' fit • Heat sealed label • Self-fabric V-neck collar • Contrast color triangular side panels with white piping • Racerback styling.

1290 LADIES: S-2XL LIST PRICE 17.10 (UPCHARGE FOR 2XL)
 1291 GIRLS: S-L LIST PRICE 15.10





854

855



LADIES WICKING MESH ENDURANCE JERSEY

100% polyester wicking mesh • Ladies' fit • Heat sealed label
 • Contrast color self-fabric neck • Contrast color shoulder and side inserts.

854 LADIES: S-2XL LIST PRICE 22.90 (UPCHARGE FOR 2XL)

855 GIRLS: S-L LIST PRICE 20.80



515

516



LADIES WICKING MESH EXTREME JERSEY

100% polyester wicking mesh • 100% polyester dazzle fabric side panels
 • Ladies' fit • Heat sealed label • Two-color self-fabric V-neck collar • Contrast color side panels with accent piping • White dazzle side panels.

515 LADIES: S-2XL LIST PRICE 18.10 (UPCHARGE FOR 2XL)

516 GIRLS: S-L LIST PRICE 16.90



RACERBACK

513

514



LADIES WICKING MESH ADVANTAGE JERSEY

100% polyester wicking mesh • 100% polyester dazzle fabric side panels • Ladies' fit
 • Heat sealed label • Contrast color self-fabric V-neck collar • Contrast color side panels with accent piping • White dazzle side panels • Racerback styling • Rib-knit armholes.

513 LADIES: S-2XL LIST PRICE 18.10 (UPCHARGE FOR 2XL)

514 GIRLS: S-L LIST PRICE 16.70



527

528



LADIES WICKING MESH POWERHOUSE JERSEY

100% polyester wicking mesh • Ladies' fit • Heat sealed label • Two-color self-fabric V-neck collar • Contrast color side panels.

527 LADIES: S-2XL LIST PRICE 17.90 (UPCHARGE FOR 2XL)

528 GIRLS: S-L LIST PRICE 15.90





WIDE RACERBACK

1202

1203



LADIES POLY/SPANDEX SOLID RACERBACK TANK

90% polyester/10% spandex knit • Odor resistant • Wicks moisture • Ladies' fit
 • Heat sealed label • Self-fabric binding at neck and armholes • Wide racerback styling for easier decoration.

1202

LADIES: S-2XL

LIST PRICE 19.00 (UPCHARGE FOR 2XL)

1203

GIRLS: S-L

LIST PRICE 17.00



**COORDINATING
 ADULT/YOUTH,
 STYLE 790/791
 PG. 14**



1790

1791



1015

1016



LADIES WICKING T-SHIRT

100% polyester wicking knit • Ladies' fit • Heat sealed label • Self-fabric V-neck collar • Set-in sleeves.

1790

LADIES: XS-2XL

CALL FOR PRICING

1791

GIRLS: S-L



LADIES ELITE JERSEY

100% polyester wicking smooth knit • Odor resistant
 • Ladies' fit • Heat sealed label • Self-fabric V-neck collar
 • Topstitched shoulder seams • Set-in sleeves.

1015

LADIES: S-2XL

LIST PRICE 14.90 (UPCHARGE FOR 2XL)

1016

GIRLS: S-L

LIST PRICE 13.50





FULLY REVERSIBLE

985 **986**

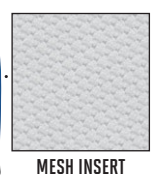
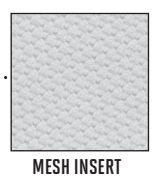
LADIES JUNIOR FIT SASSY SHORT

100% polyester tricot mesh outer layer • 100% polyester mini mesh inner layer
 • Junior fit • Low rise • Covered elastic waistband • Fully reversible • Rounded V-notch at sides • 3½-inch inseam • Girls inseam graded.

985 LADIES JUNIOR FIT: S-2XL LIST PRICE 15.90 (UPCHARGE FOR 2XL)
986 GIRLS: S-L LIST PRICE 13.90



BENEFITS:
 Built-in Brief
 Inside Key Pocket
 Low Rise



1267 **1268**

LADIES JUNIOR FIT ADRENALINE SHORT

Shell is 100% polyester micropoly • Inserts are 100% polyester mesh • Lining is 100% polyester wicking crepe • Liner wicks moisture • Junior fit • Low rise • Covered elastic waistband with inside drawcord • Inner brief with leg elastic • Inside key pocket • Contrast color lower front mesh insert • Contrast self-fabric binding on side seams and hem • 4-inch inseam • Girls inseam graded.

1267 LADIES JUNIOR FIT: S-2XL LIST PRICE 17.90 (UPCHARGE FOR 2XL)
1268 GIRLS: S-L LIST PRICE 17.00

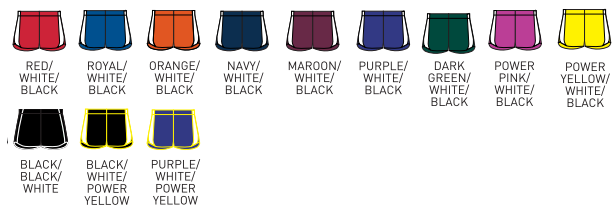


1265 **1266**

LADIES JUNIOR FIT PULSE TEAM SHORT

Shell is 100% polyester micropoly • Inserts are 100% polyester mesh • Lining is 100% polyester wicking crepe • Liner wicks moisture • Junior fit • Low rise • Covered elastic waistband with inside drawcord • Inner brief with leg elastic • Inside key pocket • Mesh insert side panel • 4-inch inseam • Contrast self-fabric binding on side panels and hem • Girls inseam graded.

1265 LADIES JUNIOR FIT: S-2XL LIST PRICE 17.90 (UPCHARGE FOR 2XL)
1266 GIRLS: S-L LIST PRICE 17.00





INTERLOCK
DOT-TEXTURED
FABRIC



WICKING INTERLOCK DOT-TEXTURED FABRIC DESIGN

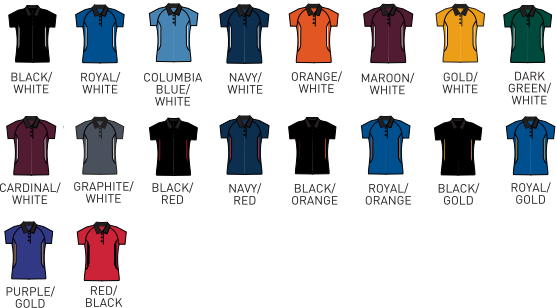
5006



LADIES MISSION SPORT SHIRT

100% polyester wicking textured knit • Ladies' fit • Heat sealed label
• Self-fabric collar • Raglan sleeves • Contrast color inserts on front
• Box-stitched placket • Three matching buttons with cross-stitching.

5006 LADIES: S-2XL LIST PRICE 23.90 (UPCHARGE FOR 2XL)



5005

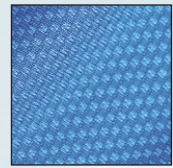


MISSION SPORT SHIRT

100% polyester wicking textured knit • Heat sealed label • Self-fabric collar
• Raglan sleeves • Contrast color inserts on front • Box-stitched placket
• Three matching buttons with cross stitching.

5005 ADULT: S-4XL LIST PRICE 23.90 (UPCHARGE FOR 2XL-4XL)





**INTERLOCK
DOT-TEXTURED
FABRIC**

5001

5002

Sample Sample Sample Sample Sample Sample Sample Sample Sample Sample

5001



NEW COLOR

VISION SPORT SHIRT

100% polyester wicking textured knit • Wicks moisture • Heat sealed label
• Self-fabric collar • Topstitched armholes and forward shoulder seams • Set-in sleeves • Box-stitched placket • Three matching buttons with cross-stitching.

5001 ADULT: S-4XL LIST PRICE 21.90 (UPCHARGE FOR 2XL-4XL)



5002



NEW COLOR

LADIES VISION SPORT SHIRT

100% polyester wicking textured knit • Wicks moisture • Ladies' fit • Heat sealed label
• Self-fabric collar • Topstitched armholes and forward shoulder seams • Set-in sleeves • Box-stitched placket • Three matching buttons with cross-stitching.

5002 LADIES: S-2XL LIST PRICE 21.90 (UPCHARGE FOR 2XL)



5092



LADIES WINNING STREAK SPORT SHIRT

100% polyester wicking closed hole mesh • 100% polyester pinhole micromesh shoulders and side panels • Ladies' fit • Heat sealed label • Self-fabric collar • Breathable pinhole mesh shoulders and side panels • Contrast color piping on shoulders, front and back • Set-in sleeves • Box stitched placket • Three matching buttons with cross-stitching.

5092 LADIES: S-2XL LIST PRICE 31.90 (UPCHARGE FOR 2XL)



5091



WINNING STREAK SPORT SHIRT

100% polyester wicking closed hole mesh • 100% polyester pinhole micromesh shoulders and side panels • Heat sealed label • Self-fabric collar • Breathable pinhole mesh shoulders and side panels • Contrast color piping on shoulders, front and back • Set-in sleeves • Box-stitched placket • Three matching buttons with cross-stitching.

5091 ADULT: S-4XL LIST PRICE 31.90 (UPCHARGE FOR 2XL-4XL)



BACK

5092

5091

1092

1093

**LADIES WINNING STREAK JERSEY**

100% polyester wicking smooth knit • 92% polyester/8% spandex wicking pinhole mesh back and side panels • Odor resistant • Ladies' fit • Heat sealed label • Self-fabric V-neck collar • Set-in sleeves • Breathable pinhole mesh shoulders, side panels, and back • Contrast color piping on front and back of shoulders and side panels.

1092 LADIES: S-2XL LIST PRICE 21.90 (UPCHARGE FOR 2XL)

1093 GIRLS: S-L LIST PRICE 19.90



1090

1091

**WINNING STREAK CREW**

100% polyester wicking smooth knit • 92% polyester/8% spandex pinhole mesh back and inserts • Odor resistant • Heat sealed label • Self-fabric collar • Set-in sleeves • Contrast color piping on shoulders, front and back.

1090 ADULT: S-3XL LIST PRICE 21.90 (UPCHARGE FOR 2XL-3XL)

1091 YOUTH: S-L LIST PRICE 19.90



1092

1090

PINHOLE MESH
INSERTS & BACK



5090



WICKING TEXTURED RAGLAN SLEEVE SPORT SHIRT

100% polyester wicking closed hole mesh • Heat sealed label • Self-fabric collar • Contrast color sleeve and side inserts • Raglan sleeves • Three matching buttons.

5090 ADULT: S-3XL LIST PRICE 31.90 (UPCHARGE FOR 2XL-3XL)



5075



BACK

5075 5076



WICKING TEXTURED SIDELINE SPORT SHIRT

100% polyester wicking closed hole mesh • Ladies' fit on style 5076 • Heat sealed label • Self-fabric collar • Contrast color front and back shoulder inserts • Set-in sleeves • Three matching buttons on Adult style 5075 • Four matching buttons on Ladies' style 5076.

5075 ADULT: S-4XL LIST PRICE 31.90 (UPCHARGE FOR 2XL-4XL)

5076 LADIES: S-2XL LIST PRICE 31.90 (UPCHARGE FOR 2XL)



5076

LADIES FIT



GAMEDAY COLLECTION



5055



WICKING TEXTURED GAMEDAY SPORT SHIRT

100% polyester wicking closed hole mesh • 94% polyester/6% spandex wicking smooth knit inserts • Heat sealed label • Self-fabric collar • Contrast color shoulder and side inserts • Smooth inserts stretch for enhanced performance • Set-in sleeves • Three matching buttons.

5055 ADULT: S-4XL LIST PRICE 33.50 (UPCHARGE FOR 2XL-4XL)



5059



LADIES SLEEVELESS WICKING TEXTURED GAMEDAY SPORT SHIRT

100% polyester wicking closed hole mesh • 94% polyester/6% spandex wicking smooth knit inserts • Ladies' fit • Heat sealed label • Self-fabric V-neck collar • Contrast color shoulder and side inserts • Smooth inserts stretch for enhanced performance • Self-fabric armholes • Side vents.

5059 LADIES: XS-2XL LIST PRICE 31.90 (UPCHARGE FOR 2XL)



1020

1021



GAMEDAY CREW

100% polyester wicking smooth knit • Odor resistant • Heat sealed label • Self-fabric collar • Contrast color shoulder and side inserts • Set-in sleeves.

1020 ADULT: S-4XL LIST PRICE 25.00 (UPCHARGE FOR 2XL-4XL)

1021 YOUTH: S-L LIST PRICE 21.00



SEE OUR GAMEDAY COLLECTION AT AUGUSTASPORTSWEAR.COM/GAMEDAY



BACK

ALL-CONFERENCE COLLECTION

5015



5016

LADIES FIT

5015 5016 

ALL-CONFERENCE SPORT SHIRT

100% polyester wicking closed hole mesh • Wicks moisture • Ladies' fit on style 5016
 • Heat sealed label • Self-fabric collar • Contrast color front and back inserts • Set-in sleeves
 • Three matching buttons.

5015 ADULT: S-4XL LIST PRICE 31.90 (UPCHARGE FOR 2XL-4XL)
5016 LADIES: S-2XL LIST PRICE 31.90 (UPCHARGE FOR 2XL)



Sample Sample Sample Sample Sample Sample Sample Sample

1030

1031

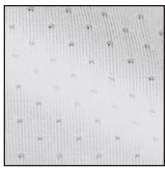


ALL-CONFERENCE CREW

100% polyester wicking knit • Wicks moisture • Heat sealed label • Self-fabric collar • Contrast color inserts • Double-needle coverstitched collar and armholes
 • Set-in sleeves.

1030 ADULT: S-3XL LIST PRICE 19.00 (UPCHARGE FOR 2XL-3XL)
1031 YOUTH: S-L LIST PRICE 17.00





PINHOLE MESH INSERT



5012

5013

LADIES FIT

PREMIER COLLECTION

5012

5013



PREMIER SPORT SHIRT

100% polyester wicking closed hole mesh • 100% polyester pinhole micromesh inserts
 • Wicks moisture • Ladies' fit on style 5013 • Heat sealed label • Self-fabric collar
 • Breathable contrast color pinhole mesh neck tape, top placket facing (color bodies)
 shoulder and front inserts • Set-in sleeves • Box-stitched placket • Three matching buttons.

5012

ADULT: S-4XL

LIST PRICE 31.90 (UPCHARGE FOR 2XL-4XL)

5013

LADIES: S-2XL

LIST PRICE 31.90 (UPCHARGE FOR 2XL)



1050

1051



PREMIER CREW

100% polyester wicking smooth knit • 92% polyester/8% spandex pinhole mesh inserts • Odor resistant • Heat sealed label • Self-fabric collar • Set-in sleeves
 • Breathable contrast color pinhole mesh shoulder and front inserts.

1050

ADULT: S-3XL

LIST PRICE 19.90 (UPCHARGE FOR 2XL-3XL)

1051

YOUTH: S-L

LIST PRICE 17.90



1055

1056



LADIES PREMIER JERSEY

100% polyester wicking smooth knit • 92% polyester/8% spandex pinhole mesh inserts
 • Odor resistant • Ladies' fit • Heat sealed label • Self-fabric V-neck collar • Topstitched shoulder seams • Set-in sleeves • Breathable contrast color pinhole mesh shoulder and front inserts.

1055

LADIES: S-2XL

LIST PRICE 19.90 (UPCHARGE FOR 2XL)

1056

GIRLS: S-L

LIST PRICE 17.90



5086



5086

5087



WICKING TEXTURED COLOR BLOCK SPORT SHIRT

100% polyester wicking closed hole mesh • Ladies' fit on style 5087
 • Heat sealed label • Self-fabric collar • Contrast color shoulder inserts with smooth texture • Raglan sleeves • Three matching buttons on Adult style 5086 • Buttonless placket on Ladies' style 5087.

5086 ADULT: S-5XL LIST PRICE 31.90 (UPCHARGE FOR 2XL-5XL)



5087 LADIES: S-3XL LIST PRICE 31.90 (UPCHARGE FOR 2XL-3XL)



5087

LADIES FIT



5095



5095

5097



WICKING MESH SPORT SHIRT

100% polyester wicking closed hole mesh • Ladies' fit on style 5097
 • Heat sealed label • Matching rib-knit collar • Set-in sleeves
 • Three matching buttons.

5095 ADULT: S-3XL LIST PRICE 25.90 (UPCHARGE FOR 2XL-3XL)

5097 LADIES: S-3XL LIST PRICE 25.90 (UPCHARGE FOR 2XL-3XL)



5097

LADIES FIT





SNAG RESISTANT



5047

5048

DESIGNED TO LAST

LOOK & FEEL GREAT IN DURABLE SNAG RESISTANT WICKING FABRIC

5047



GENESIS SPORT SHIRT

100% polyester wicking snag resistant knit • Wicks moisture • Heat sealed label • Self-fabric collar with contrasting color neck tape • Two-color shoulder inserts • Topstitched armholes • Set-in sleeves • Box-stitched placket • Three matching buttons with cross-stitching.

5047 ADULT: S-4XL LIST PRICE 33.90 (UPCHARGE FOR 2XL-4XL)



5048



LADIES GENESIS SPORT SHIRT

100% polyester wicking snag resistant knit • Wicks moisture • Ladies' fit • Heat sealed label • Self-fabric collar with contrasting color neck tape • Two-color shoulder inserts • Topstitched armholes • Set-in sleeves • Box-stitched placket • Three matching buttons with cross-stitching.

5048 LADIES: S-2XL LIST PRICE 33.90 (UPCHARGE FOR 2XL)



MOTION COLLECTION



5041



MOTION SPORT SHIRT

100% polyester wicking snag resistant knit • 100% polyester pinhole micromesh cuff • Wicks moisture • Heat sealed label • Self-fabric collar • Breathable contrast color pinhole mesh neck tape, piping on shoulder, and sleeve cuff • Topstitched armholes • Set-in sleeves • Box-stitched placket • Three matching buttons with cross-stitching.

5041 ADULT: S-4XL

LIST PRICE 33.90 (UPCHARGE FOR 2XL-4XL)



5042



SNAG RESISTANT



LADIES FIT

LADIES MOTION SPORT SHIRT

100% polyester wicking snag resistant knit • 100% polyester pinhole micromesh cuff • Wicks moisture • Ladies' fit • Heat sealed label • Self-fabric collar • Breathable contrast color pinhole mesh neck tape, piping on shoulder, and sleeve cuff • Topstitched armholes • Set-in sleeves • Box-stitched placket • Three matching buttons with cross-stitching.

5042 LADIES: S-2XL

LIST PRICE 33.90 (UPCHARGE FOR 2XL)



5043

5044



MOTION CREW

100% polyester wicking smooth knit • Odor resistant • Wicks moisture • Heat sealed label • Self-fabric collar • Topstitched shoulder seams • Set-in sleeves • Contrast color piping on shoulder • Contrast color insert at sleeve hem.

5043 ADULT: S-3XL

LIST PRICE 19.90 (UPCHARGE FOR 2XL-3XL)

5044 YOUTH: S-L

LIST PRICE 17.90



5045

5046



LADIES MOTION JERSEY

100% polyester wicking smooth knit • Odor resistant • Wicks moisture • Ladies' fit • Heat sealed label • Self-fabric V-neck collar • Topstitched shoulder seams • Set-in sleeves • Contrast color piping on shoulder • Contrast color insert at sleeve hem.

5045 LADIES: S-2XL

LIST PRICE 18.40 (UPCHARGE FOR 2XL)

5046 GIRLS: S-L

LIST PRICE 16.50



11-INCH
(YOUTH
INSEAM
GRADED)



..... SIDE SEAM POCKETS

1470 1471  

CYCLONE SHORT

100% polyester wicking smooth knit • 100% polyester wicking knit inserts • 100% polyester wicking mesh inserts • Odor resistant • Wicks moisture • Heat sealed label • Covered elastic waistband with inside drawcord • Side seam pockets • Contrast color side inserts • 11-inch inseam • Youth inseam graded.

1470 ADULT: S-3XL LIST PRICE 21.90 (UPCHARGE FOR 2XL-3XL)
1471 YOUTH: S-L LIST PRICE 19.90



9-INCH
PRO CUT



..... SIDE SEAM POCKETS

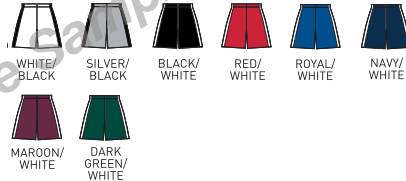
..... MESH INSERT

1400   

STAFF SHORT

100% polyester wicking smooth knit • 100% polyester wicking mesh inserts • Odor resistant • Wicks moisture • Full-cut • Heat sealed label • Covered elastic waistband with inside drawcord • Side seam pockets • Contrast color side inserts • 9-inch inseam.

1400 ADULT: S-4XL LIST PRICE 21.00 (UPCHARGE FOR 2XL-4XL)



9-INCH
(YOUTH
INSEAM
GRADED)
PRO CUT



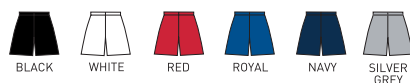
..... SIDE SEAM POCKETS

803 814  

LONGER LENGTH WICKING SHORT WITH POCKETS

100% polyester wicking mesh • Full-cut • Covered elastic waistband with inside drawcord • Side seam pockets • 9-inch inseam • Youth inseam graded.

803 ADULT: S-3XL LIST PRICE 19.90 (UPCHARGE FOR 2XL-3XL)
814 YOUTH: S-L LIST PRICE 17.00



9-INCH
PRO CUT



..... SIDE SEAM POCKETS

949   

POLY/SPANDEX SHORT WITH POCKETS

90% polyester/10% spandex knit • Odor resistant • Wicks moisture • Full-cut • Heat sealed label • Covered elastic waistband with inside drawcord • Side seam pockets • 9-inch inseam.

949 ADULT: S-4XL LIST PRICE 22.50 (UPCHARGE FOR 2XL-4XL)





4760

NEW FABRIC



ZEAL PULLOVER

Brushed back 90% polyester/10% spandex knit • Soft brushed back poly/spandex knit offers 4-way stretch • Heat sealed label • Contrast color half-zip pullover style • Raglan sleeves • Contrast color inserts on sleeves and front • Open bottom.

4760 ADULT: S-3XL LIST PRICE 45.90 (UPCHARGE FOR 2XL-3XL)



4810

4811

NEW FABRIC



LADIES FREEDOM JACKET

Brushed back 90% polyester/10% spandex knit • Soft brushed back poly/spandex knit offers 4-way stretch • Wicks moisture • Ladies' fit • Heat sealed label • Front zipper and zipper garage • Raglan sleeves with thumbholes for warmth • Contrast color inserts on back of collar, shoulder and front • Front seam pockets • Open bottom.

4810 LADIES: S-2XL LIST PRICE 45.90 (UPCHARGE FOR 2XL)

4811 GIRLS: S-L LIST PRICE 43.90



NEW COLORS



4752

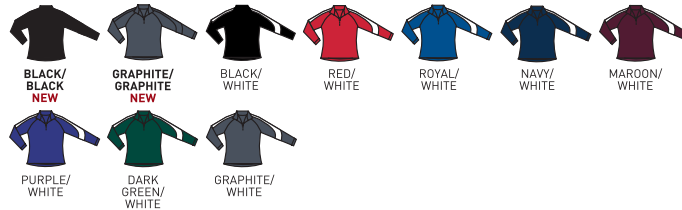


**COORDINATING ADULT,
STYLE 4750 PG. 16**

LADIES SYNERGY PULLOVER

90% polyester/10% spandex knit • Wicks moisture • Ladies' fit • Heat sealed label • Half-zip pullover style • Raglan sleeves with contrast color inserts • Self-fabric cuffs • Dropped tail.

4752 LADIES: XS-2XL LIST PRICE 41.90 (UPCHARGE FOR 2XL)



728

729



LADIES POLY/SPANDEX PANT

90% polyester/10% spandex knit • Wicks moisture • Ladies' fit • Heat sealed label • Low rise • Double-needle coverstitched waistband with covered elastic.

728 LADIES: S-2XL LIST PRICE 33.90 (UPCHARGE FOR 2XL & TALL SIZES)

TALL LADIES: MT-2XLT

729 GIRLS: S-L LIST PRICE 31.90

*Available in Tall

728 AVAILABLE IN TALL*



NEW COLORS

4390

4391



SIDE SEAM POCKETS

MEDALIST JACKET

Heavyweight 100% polyester brushed tricot • Front zipper • Contrast color inserts on front • Raglan sleeves • Front seam pockets • Elastic cuffs and bottom band.

4390 ADULT: S-2XL

LIST PRICE 31.40 (UPCHARGE FOR 2XL)

4391 YOUTH: S-L

LIST PRICE 29.70



7755

7756

MEDALIST PANT

Heavyweight 100% polyester brushed tricot • Covered elastic waistband with inside drawcord • Side seam pockets • Contrast color side inserts • Zipper on outside lower leg.

7755 ADULT: S-2XL

LIST PRICE 29.10 (UPCHARGE FOR 2XL)

7756 YOUTH: S-L

LIST PRICE 26.50

NEW COLORS

4392



LADIES FIT

SIDE SEAM POCKETS

LADIES MEDALIST JACKET

Heavyweight 100% polyester brushed tricot • Ladies' fit • Front zipper • Raglan sleeves • Contrast color inserts on front • Front seam pockets • Elastic cuffs • Open bottom.

4392 LADIES: S-2XL

LIST PRICE 31.40 (UPCHARGE FOR 2XL)

For Youth sizes, see style 4391.



7752

LADIES MEDALIST PANT

Heavyweight 100% polyester brushed tricot • Ladies' fit • Covered elastic waistband with inside drawcord • Side seam pockets • Contrast color side inserts • Zipper on outside lower leg.

7752 LADIES: S-2XL

LIST PRICE 29.10 (UPCHARGE FOR 2XL)

For Youth sizes, see style 7756.

TO SEE OUR FULL OUTERWEAR/WARMUPS OFFERING VISIT US ONLINE AT AUGUSTASPORTSWEAR.COM

WARMUPS

AUGUSTASPORTSWEAR.COM



SIDE
POCKETS

AVAILABLE IN TALL*

3730



FURY JACKET

Outer shell of 100% polyester diamond tech • Lined with 100% polyester taffeta • Center front zipper
• Contrast color sleeve and front inserts with contrast piping • Raglan sleeves • Front pockets
• Elastic cuffs • Open bottom.

3730 ADULT: XS-3XL LIST PRICE 41.90 (UPCHARGE FOR 2XL-3XL)



3705

NEW COLOR

SOLID PANT

Outer shell of 100% polyester diamond tech • Lined with 100% polyester taffeta and 100% polyester mesh
• Covered elastic waistband with inside drawcord • Side seam pockets • Zipper on outside lower leg
• Single-needle hemmed bottom.

3705 ADULT: XS-3XL LIST PRICE 37.90 (UPCHARGE FOR 2XL-3XL & TALL SIZES)

TALL ADULT: LT-3XLT

*Available in Tall



SIDE
POCKETS

AVAILABLE IN TALL*

3732



LADIES FURY JACKET

Outer shell of 100% polyester diamond tech • Lined with 100% polyester taffeta • Ladies' fit
• Center front zipper • Contrast color sleeve and front inserts with contrast piping
• Raglan sleeves • Front pockets • Elastic cuffs • Open bottom.

3732 LADIES: XS-2XL LIST PRICE 41.90 (UPCHARGE FOR 2XL)



3715

NEW COLOR

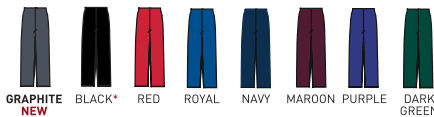
LADIES SOLID PANT

Outer shell of 100% polyester diamond tech • Lined with 100% polyester taffeta and 100% polyester mesh
• Ladies' fit • Covered elastic waistband with inside drawcord • Side seam pockets • Zipper on outside lower leg • Single-needle hemmed bottom.

3715 LADIES: XS-2XL LIST PRICE 37.90 (UPCHARGE FOR 2XL & TALL SIZES)

TALL LADIES: MT-2XLT

*Available in Tall



TO SEE OUR FULL OUTERWEAR/WARMUPS OFFERING
VISIT US ONLINE AT AUGUSTASPORTSWEAR.COM



1770

TRAVERSE BACKPACK

600-denier polyester with PVC coating • Zippered main compartment • Zippered compartment on bottom holds ball • Inside zippered pocket • Separate black mesh pockets on each side • Web handle at top, reinforced at stress points • Padded back for support and comfort • Adjustable padded shoulder straps.

1770 12"W X 20"H X 8"D

CALL FOR PRICE

 BLACK/ BLACK	 RED/ BLACK	 ROYAL/ BLACK	 ORANGE/ BLACK	 MAROON/ BLACK	 GOLD/ BLACK	 DARK GREEN/ BLACK	 LIGHT PINK/ BLACK
 ROYAL/ RED	 NAVY/ NAVY	 BLACK/ GOLD	 ROYAL/ GOLD	 NAVY/ GOLD	 PURPLE/ GOLD	 DARK GREEN/ GOLD	



BOTTOM BALL COMPARTMENT







1831

TRI-COLOR BALL BACKPACK

600-denier polyester with PVC coating • Zippered main compartment with two zipper pulls • One angled white stripe on front sides • Separate black mesh zippered pockets on each side • Front black mesh pleated pocket with elastic binding holds ball • Black web handle, reinforced at stress points • Inside zippered pocket • Inside plastic key holder hook • Padded back for support and comfort • Padded shoulder straps with adjustable side tabs • Contrast white piping trim.

1831 16½"W X 16½"H X 9"D

CALL FOR PRICE

 BLACK/ BLACK/ WHITE	 RED/ BLACK/ WHITE	 ROYAL/ BLACK/ WHITE	 NAVY/ BLACK/ WHITE
---	---	---	--



1920

TRI-COLOR DRAWSTRING BACKPACK

210-denier nylon with PU coating • Hemmed top with drawcord closure • Zippered front pocket • Black bottom with white accent piping • Web tab at bottom corner for reinforcement.

1920 14"W X 18"H

CALL FOR PRICE

 BLACK/ BLACK/ WHITE	 RED/ BLACK/ WHITE	 ROYAL/ BLACK/ WHITE	 COLUMBIA BLUE/ BLACK/ WHITE	 NAVY/ BLACK/ WHITE	 GOLD/ BLACK/ WHITE	 PURPLE/ BLACK/ WHITE	 KELLY/ BLACK/ WHITE	 LIGHT PINK/ BLACK/ WHITE
---	---	---	--	--	--	--	---	---



**TO SEE OUR FULL OFFERING OF BAGS VISIT US
ONLINE AT AUGUSTASPORTSWEAR.COM**



AUGUSTASPORTSWEAR.COM

Sample Sample Sample Sample Sample

